

THE NEW THEATRE

ADDRESS:	Essex Street, Temple Bar, Dublin 2
WEBSITE:	www.thenewtheatre.com
DESCRIPTION:	Compact but well equipped black box space. Smaller stage but comfortable raked seating. Very nice energy. Ideally located at the rear of a bookshop in the heart of Temple Bar in the city centre.
RECOMMENDED FOR:	Small scale theatre work, new writing & stand-up comedy. 60 minutes duration Shared venue - 2 shows per day
NOT RECOMMENDED FOR:	o Extremely limited stage area for dance and physical work o Large scale set pieces due to restricted turnaround time and storage space in a sharing situation
CAPACITY:	Capacity 66 in end-on raked seating.
TECHNICAL NOTES:	o Shared LX rig for the duration of the festival. Dublin Fringe Festival will ensure that sharing companies communicate in advance of the festival, and share the resources evenly o Dublin Fringe Festival provide a venue manager to oversee the smooth running of the venue, assist with hanging and focusing the shared LX rig and set up sound equipment. Each company must provide their own design team and technical crew to run their show and turnarounds, operator must be trained.
ACCESS:	o Can accomodate one wheelchair user per performance
FRONT OF HOUSE ARRANGEMENTS:	o Venue does not have its own box office or front of house. Festival volunteers will be provided.

SAMPLE DUBLIN FRINGE FESTIVAL SCHEDULE

Sunday Week 1	
10am-2.30pm	shared Companies Fitup Lx and Sound
2.30pm-3.30pm	break
3.30pm-8pm	tech 18:00
8pm	finish
Monday Week 1	
10am-11.30am	dress 18:00
11.30am-12.00	turnaround
12.00-12.30pm	reset
12.30pm-4.30pm	tech 20:00:
4.30pm-6pm	dress 20:00:
6pm-7pm	dinner fixes and prepare
7pm-8pm	one hr. call
8pm-9pm	Preview 20:00: (60 mins)
9pm	turnaround
9.30pm	finish
Tuesday Week 1	
10am-2pm	tech 13:00:
2pm-2.30pm	turnaround
2.30pm-4pm	fixes 20:00:
4pm-5pm	prepare 6pm Slot Week 1
5pm-6pm	one hr. call
6pm-6.50pm	Preview 18:00: (60 mins)
7pm-7.45pm	turnaround
8pm-8.55pm	Show 20:00: (60 mins)
9pm-9.30pm	turnaround
9.30pm	finish
Wednesday Week 1	
10am-12.00	dress 13:00:
12.00-1pm	one hr. call
1pm-2.10pm	Show 13:00: (50 mins)
2.10pm-3pm	turnaround
3pm-5pm	fixes 18:00:
5pm-6pm	one hr. call
6pm-7pm	Show 18:00: (60 mins)
7pm-7.45pm	turnaround
8pm-9pm	Show 20:00: (60 mins)
9pm-9.30pm	turnaround
9.30pm	finish
Thursday Week 1	
11am-12.00	prepare 13:00:
12.00-1pm	one hr. call
1pm-2.10pm	Show 13:00: (50 mins)
2.10pm-3pm	GETOUT

4.30pm-5.00pm	prepare
5pm-6pm	one hr. call
6pm-7pm	Show 18:00: (60 mins)
7pm-7.45pm	turnaround and getout
8pm-9pm	Show 20:00: (60 mins)
9pm-9.30pm	turnaround
9.30pm	finish
Friday Week 1	
11am-12.00	prepare 13:00:
12.00-1pm	one hr. call
1pm-2.10pm	Show 13:00: (50 mins)
2.10pm-3pm	GETOUT
4.30pm-5.00pm	prepare
5pm-6pm	one hr. call
6pm-7pm	Show 18:00: (60 mins)
7pm-7.45pm	turnaround and getout
8pm-9pm	Show 20:00: (60 mins)
9pm-9.30pm	turnaround
9.30pm	finish
Saturday Week 1	
11am-12.00	prepare 13:00:
12.00-1pm	one hr. call
1pm-2.10pm	Show 13:00: (50 mins)
2.10pm-3pm	GETOUT
4.30pm-5.00pm	prepare
5pm-6pm	one hr. call
6pm-7pm	Show 18:00: (60 mins)
7pm-7.45pm	turnaround and getout
8pm-9pm	Show 20:00: (60 mins)
9.05pm-11.30pm	GETOUT
11.30pm	finish
Sunday Week 2	
10am-2.30pm	shared Companies Fitup Lx and Sound
2.30pm-3.30pm	break
3.30pm-8pm	tech 18:00:
8pm	finish
Monday Week 2	
10am-11.30am	dress 18:00:
11.30am-12.00	turnaround
12.00-12.30pm	reset
12.30pm-4.30pm	tech 20:00:
4.30pm-6pm	dress 20:00:
6pm-7pm	dinner fixes and prepare
7pm-8pm	one hr. call
8pm-9pm	Preview 20:00: (60 mins)
9pm	turnaround
9.30pm	finish
Tuesday Week 2	
10am-2pm	tech 13:00:

2pm-2.30pm	turnaround
2.30pm-4pm	fixes 20:00:
4pm-5pm	prepare
5pm-6pm	one hr. call
6pm-6.50pm	Preview 18:00:
7pm-7.45pm	turnaround
8pm-8.55pm	Show 20:00:
9pm-9.30pm	turnaround
9.30pm	finish
Wednesday Week 2	
10am-12.00	dress/tech for show at 13:00
12.00-1pm	one hr. call
1pm-2.20pm	Show 13:00:(P) (50 mins)
2.20pm-3pm	turnaround
3pm-5pm	fixes 18:00:
5pm-6pm	one hr. call
6pm-7pm	Show 18:00: (60 mins)
7pm-7.45pm	turnaround
8pm-9pm	Show 20:00: (60 mins)
9pm-9.30pm	turnaround
9.30pm	finish
Thursday Week 2	
11am-12.00	fixes for show at 13:00:
12.00-1pm	one hr. call
1pm-2.20pm	Show 13:00: (50 mins)
2.20pm-3pm	turnaround
4.30pm-5.00pm	prepare
5pm-6pm	one hr. call
6pm-7pm	Show 18:00: (60 mins)
7pm-7.45pm	turnaround
8pm-9pm	Show 20:00: (60 mins)
9pm-9.30pm	turnaround
9.30pm	finish
Friday Week 2	
11am-12.00	prepare 13:00:
12.00-1pm	one hr. call
1pm-2.20pm	Show 13:00: (50 mins)
2.20pm-3pm	turnaround
4.30pm-5.00pm	prepare
5pm-6pm	one hr. call
6pm-7pm	Show 18:00: (60 mins)
7pm-7.45pm	turnaround
8pm-9pm	Show 20:00: (60 mins)
9pm-9.30pm	turnaround
9.30pm	finish
Saturday Week 2	
11am-12.00	prepare 13:00:
12.00-1pm	one hr. call
1pm-2.20pm	Show 13:00: (50 mins)
2.20pm-3pm	turnaround getout

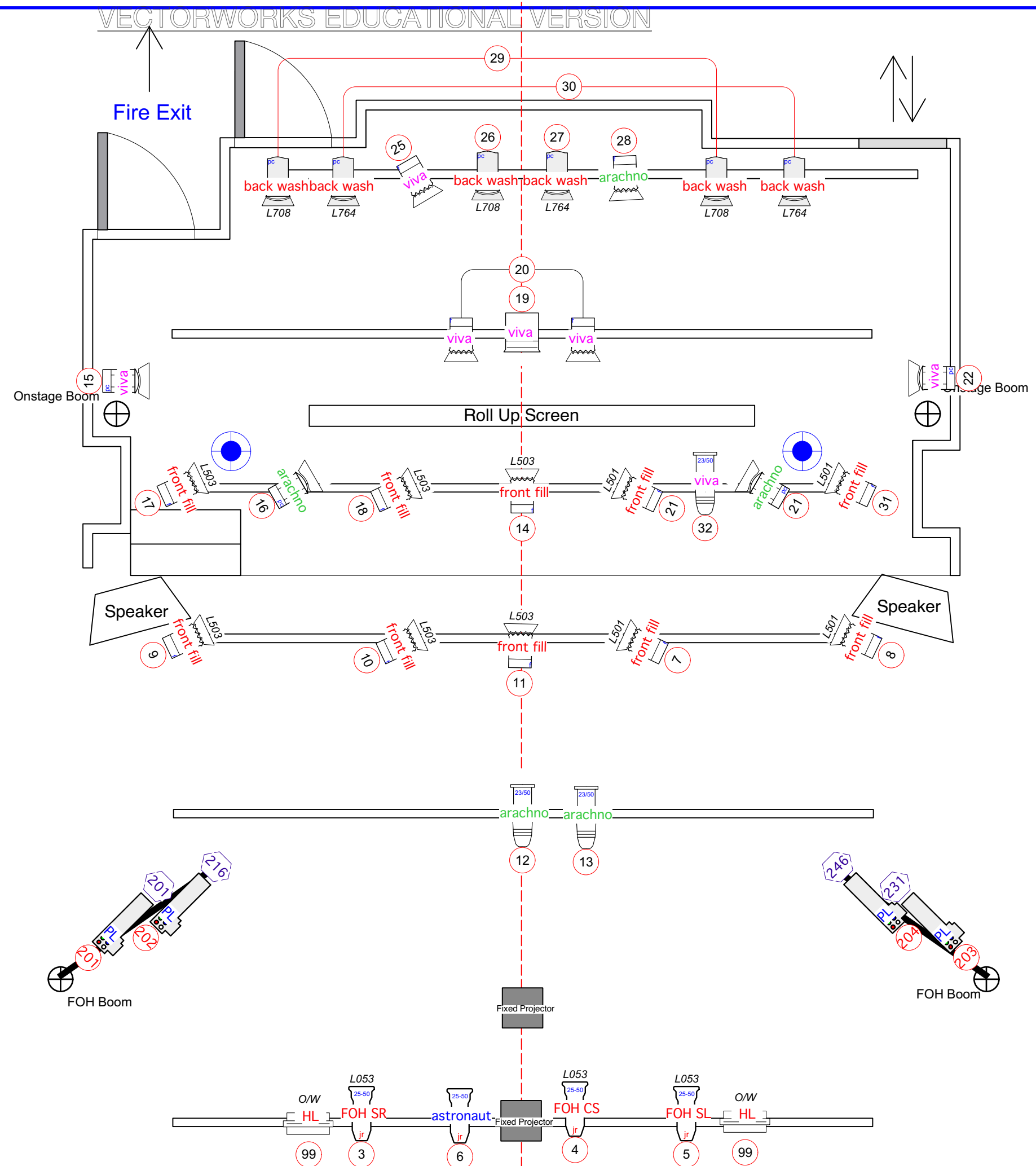
4.30pm-5.00pm	prepare
5pm-6pm	one hr. call
6pm-7pm	Show 18:00: (60 mins)
7pm-7.45pm	turnaround getout
8pm-9pm	Show 20:00: (60 mins)
9.05pm-11.30pm	GETOUT
11.30pm	finish

Total Hours

THE NEW THEATRE: TECHNICAL SPECIFICATIONS

STAGE DIMENSIONS		
3500mm deep 5825mm wide 3800 to Grid.		
LIGHTING EQUIPMENT	AMT	
Festival lighting plan rigged as per plan		see plan- will be rigged and focused by fringe staff in advance of tech times
ETC Source 4 Jr Zoom	1	
Minulette Fresnel	2	
Quartet Fresnel	1	
Source 4 fixed beam profile (various lens)	2	
Source 4 Par (various lens)	2	
Sound Equipment	amount	
Macbook with Audio and Video QLAB	1	
Firewire audio interface 6 output	1	
Venice 160 Midas Sound desk 16 channel	1	
MC2 E25 Amplifier	2	
TD controller	2	
Nexo ps15 FOH	2	
Nexo ps8	2	
KT Square one EG	1	
Tascam CD160	1	
Tascam MD350	1	
Shure SM58	1	
CK1000 condensor	1	
Micstand	1	
Passive DI	2	
Other equipment		

Fire Exit must be kept clear of set



Show

Fringe 18

Venue

The New Theatre

Stage Designer

Lighting Designer

Various

Drawing Title

Drawing Purpose

Rigging

Drawn By

Aaron Kelly

Date _____

08/09/18

Scale

Do Not Scale

Rev

01

Sht No

01

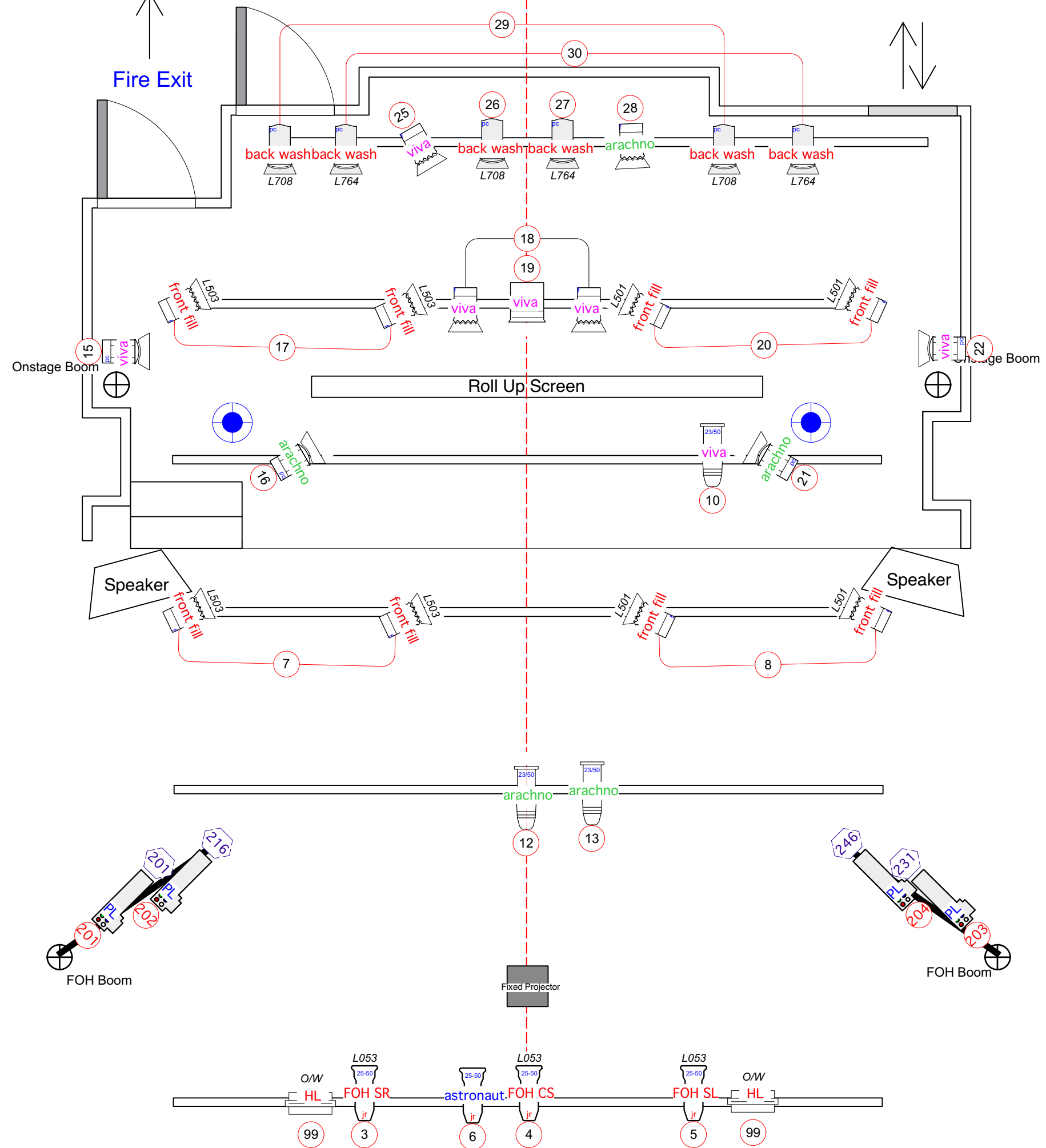
Notes

ETC Element lighting control console

36 ways of dimming
+1 Dedicated Houselight dimmer

PL Profiles 16bit mode

Fire Exit must be kept clear of set



	Cantata PC	1 / 2
	Strand SL 23/50	3 / 8
	Strand Quartet PC	4 / 4
	PL1 LED Luminaire	4 / 4
	Strand Quartet F	12 / 12
	Acclaim PC	6 / 6
	S4 Jr Zoom	4 / 4
	Strand Coda 1000	2 / 2
	PAR 64 MFL	0 / 4

Show	Fringe 18	
Venue	The New Theatre	
Stage Designer		
Lighting Designer	Various	
Drawing Title		
Drawing Purpose	Rigging	
Drawn By	Aaron Kelly	
Date	02/09/18	Scale Do Not Scale
Rev	01	Sht No 01
Notes		

NEW THEATRE TECH SPEC 2016

Lighting:

8 of Strand SL 23/50 Profiles 600w^[L]_[SEP]

4 of Source 4 Junior Zoom 25/50 Profiles 575w

4 X Selecon PL1 Profiles

8 of Strand Quartet Fresnels 650w

4 X Quartet PC

2 X Cantata PC

6 of Selecon Acclaim PCs 650w^[L]_[SEP]

2 of Thomas Floods 500w^[L]_[SEP]

4 of Thomas Par 16 Birdies 50w^[L]_[SEP]

2 of Thomas Par 64 1kw