

THE LIR: STUDIO 1

ADDRESS:	National Academy of Dramatic Art, Trinity Technology and Enterprise Campus, Pearse St (at Grand Canal Quay), Dublin 2
WEBSITE:	www.thelir.ie
DESCRIPTION:	Flexible black box space studio in a modern purpose built venue with excellent technical resources.
RECOMMENDED FOR:	<ul style="list-style-type: none">o Theatre, dance. 60 minutes durationo Shared venue - 2 shows per day.
NOT RECOMMENDED FOR:	<ul style="list-style-type: none">o Limited set storage space
CAPACITY:	115 depending on seating configuration.
TECHNICAL NOTES:	<ul style="list-style-type: none">o Shared LX rig for the duration of the festival. Dublin Fringe Festival will design a shared lighting plan, in consultation with the companieso See sample LX plan for further informationo Dublin Fringe Festival provide a venue manager to oversee the smooth running of the venue, and crew to assist with hanging and focusing the shared LX rig and set up sound equipment. Each company must provide their own design team and technical crew to run their show and turnarounds
	Approx 9m (width) x 8m (depth). 7.6m high
ACCESS:	<ul style="list-style-type: none">o Wheelchair accessible. Induction loop system available
FRONT OF HOUSE ARRANGEMENTS:	<ul style="list-style-type: none">o Venue box office, front of house staff and bar facilities

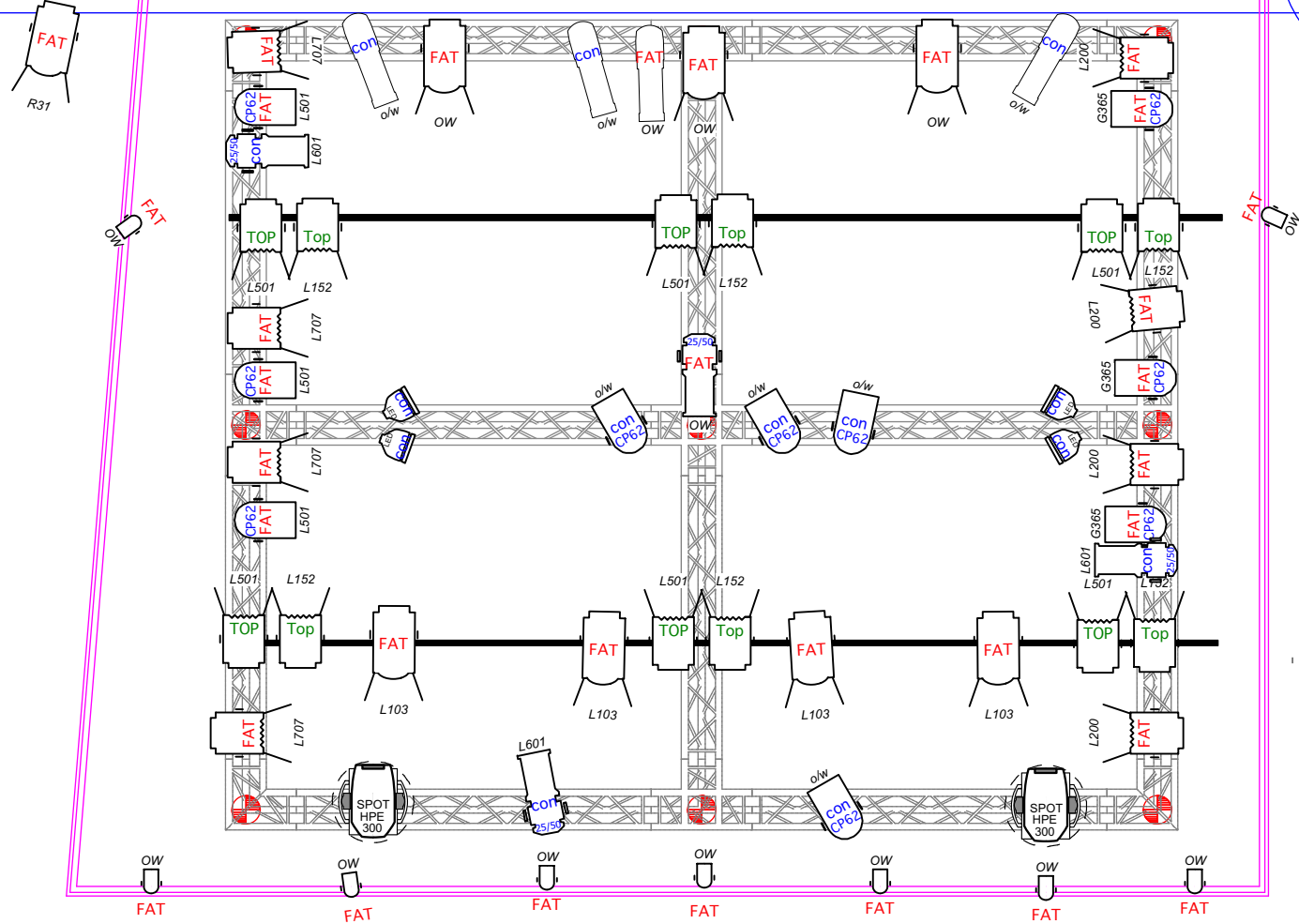
THE LIR: STUDIO 1

Mon 1st	
10.00-13.30	<i>Install & Focus LX</i>
	break
14.30-17.30	<i>Install & Focus LX</i>
	break
18.30-21.30	<i>Install & Focus LX</i>
21.30	finish
Tue 2nd	Tue 10th
10.00-13.30	<i>Install & Focus LX</i>
	break
14.30-17.30	Show Week One 20:45-21:45 tech day
	break
18.30-21.30	Show Week One 20:45-21:45 tech day
21.30	finish
Wed 3rd	
10.00-14.00	Show Week One 20:45-21:45 tech day
14.00-15.00	break
15.00-18.30	Show Week One 20:45-21:45 tech day
18.30-19.30	break
19.30-22.00	Show Week One 20:45-21:45 tech day
22.00	finish
Thursday 4th	
10.30-13.00	Show Week One 20:45-21:45 tech day
13.00-14.00	break
14.00-17.30	Show Week One 20:45-21:45 tech day
17.30	notes and fixes
18.45	dinner
19.45	
20.45-21.45	PREVIEW Show Week One 20:45-21:45
22.15-23.00	notes
23.00	finish
Friday 5th	
10.00-13.00	notes and fixes
13.00-14.00	break
14.00-18.00	notes and fixes
18.00	final checks
18.45	dinner
19.45	
20.45-21.45	PREVIEW Show Week One 20:45-21:45
22.15-23.00	notes
23.00	finish
Sat 6th	
10.00-13.00	notes and fixes
13.00-14.00	break
14.00-18.00	notes and fixes




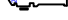




18.00	final checks
18.45	dinner
19.45	
20.45-21.45	SHOW Show Week One 20:45-21:45
22.15	Clear and turnaround
23.00	finish
Sun 7th	
10.00-14.00	tech Show Week One 18:30-19:30
14.00-15.00	break
15.30-19.00	tech Show Week One 18:30-19:30
19.00-20.30	turnaround and reset
20.45-21.45	SHOW Show Week One 20:45-21:45
22.15	Clear and turnaround
23.00	finish
Mon 8th	
10.00-14.00	tech Show Week One 18:30-19:30
14.00-15.00	break
15.00-16.30	tech/dress Show Week One 18:30-19:30
18.30-19.30	Preview Show Week One 18:30-19:30
19.30-22.00	notes nd fixes
22.00	finish
Tue 9th	
12.00-12.30	prepare
12.30-16.30	notes nd fixes
18.30-19.30	SHOW Show Week One 18:30-19:30
19.30-20.30	turnaround and reset
20.45-21.45	SHOW Show Week One 20:45-21:45
22.15	Clear and turnaround
23.00	finish
Wed 10th	
16.30	prepare
18.30-19.30	SHOW Show Week One 18:30-19:30
19.30-20.30	turnaround and reset
20.45-21.45	SHOW Show Week One 20:45-21:45
22.15	Clear and turnaround
23.00	finish
Thursday 11th	
16.30	prepare
18.30-19.30	SHOW Show Week One 18:30-19:30
19.30-20.30	turnaround and reset
20.45-21.45	SHOW Show Week One 20:45-21:45
22.15	Clear and turnaround
23.00	finish
Friday 12th	
16.30	prepare
18.30-19.30	SHOW Show Week One 18:30-19:30
19.30-20.30	turnaround and reset

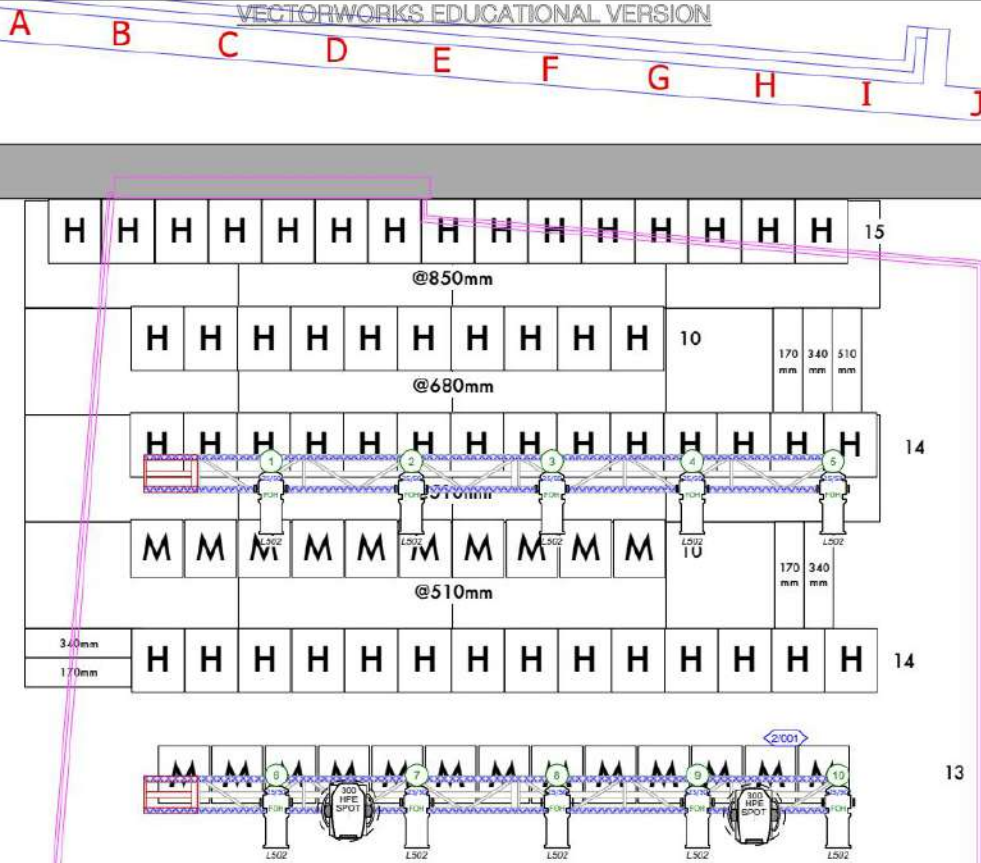
20.45-21.45	SHOW Show Week One 20:45-21:45
22.15	Clear and turnaround
23.00	finish
Saturday 13th	
12.30	prepare
15.00-16.00	SHOW Show Week One 18:30-19:30
18.30-19.30	SHOW Show Week One 18:30-19:30
19.30-20.30	turnaround and reset
20.45-21.45	SHOW Show Week One 20:45-21:45
22.15	STRIKE
23.30	finish
Sun 14th	
10.00-18.00	rerig rejig
18.30-21.30	tech Show Week Two 20:45-21:45
22.00	finish
Mon 15th	
11.00-14.00	tech Show Week Two 20:45-21:45
14.00-15.00	break
15.00-16.30	tech/dress Show Week Two 20:45-21:45
20:45-21:45	Preview Show Week Two 20:45-21:45
21.45-22.45	notes nd fixes
23.00	finish
Tue 16th	
10.30-12.30	rig / focus LX
12.30-14.00	finish focus and plot
14.00-15.00	lunch
15.00-17.00	QtoQ
17.00-17.30	technical fixes
18.30-19.30	Preview Week Two 18:30-19:30
19.30-20.30	turnaround and reset
20:45-21:45	Show Week Two 20:45-21:45
21:45	Clear and turnaround
22.30	finish
Wed 17th	
15.00-16.00	reset
16.00-17.30	technical fixes
18.30-19.30	Show Week Two 18:30-19:30
19.30-20.30	turnaround and reset
20:45-21:45	Show Week Two 20:45-21:45
21:45	Clear and turnaround
22.30	finish
Thursday 18th	
16.30-17.30	reset
18.30-19.30	Show Week Two 18:30-19:30

19.30-20.30	turnaround and reset
20:45-21:45	Show Week Two 20:45-21:45
21:45	Clear and turnaround
22.30	finish
Friday 19th	
16.30-17.30	reset
18.30-19.30	Show Week Two 18:30-19:30
19.30-20.30	turnaround and reset
20:45-21:45	Show Week Two 20:45-21:45
21:45	Clear and turnaround
22.30	finish
Saturday 20th	
Saturday 20th	
13:00-14.00	reset
15.00-16.00	Show Week Two 18:30-19:30
18.30-19.30	Show Week Two 18:30-19:30
19.30-20.30	turnaround and reset
20:45-21:45	Show Week Two 20:45-21:45
21:45	STRIKE
23.30	finish
Total Hours	



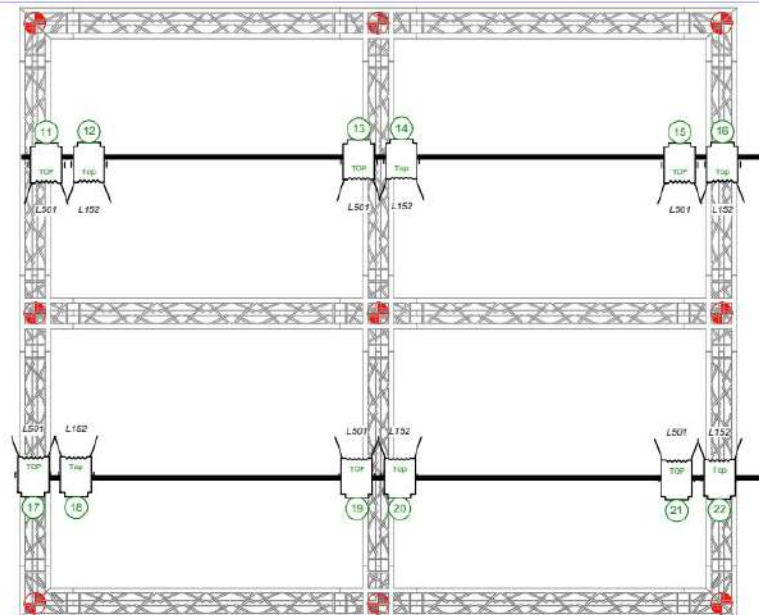
76 SEATS
90 with low chairs in front row

	Light Instr Elation Design LED Par Zoom	4
	SPX 15-30	5
	Selecon SPX 25/50	15
	Rama PC	10
	Selecon Rama F	20
	Par 64 CP62	10
	Par 16	9
	Clay Paky Alpha Spot HPE 575	2



76 SEATS

90 with low chairs in front row



Clay Paky Alpha Spot HPE 575

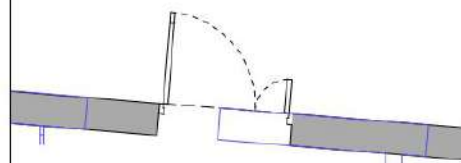


Selecon Rama F



Selecon SPX 25/50

Color	Size	Count
L152	7"	6
L501	7"	7
L502	6"	10

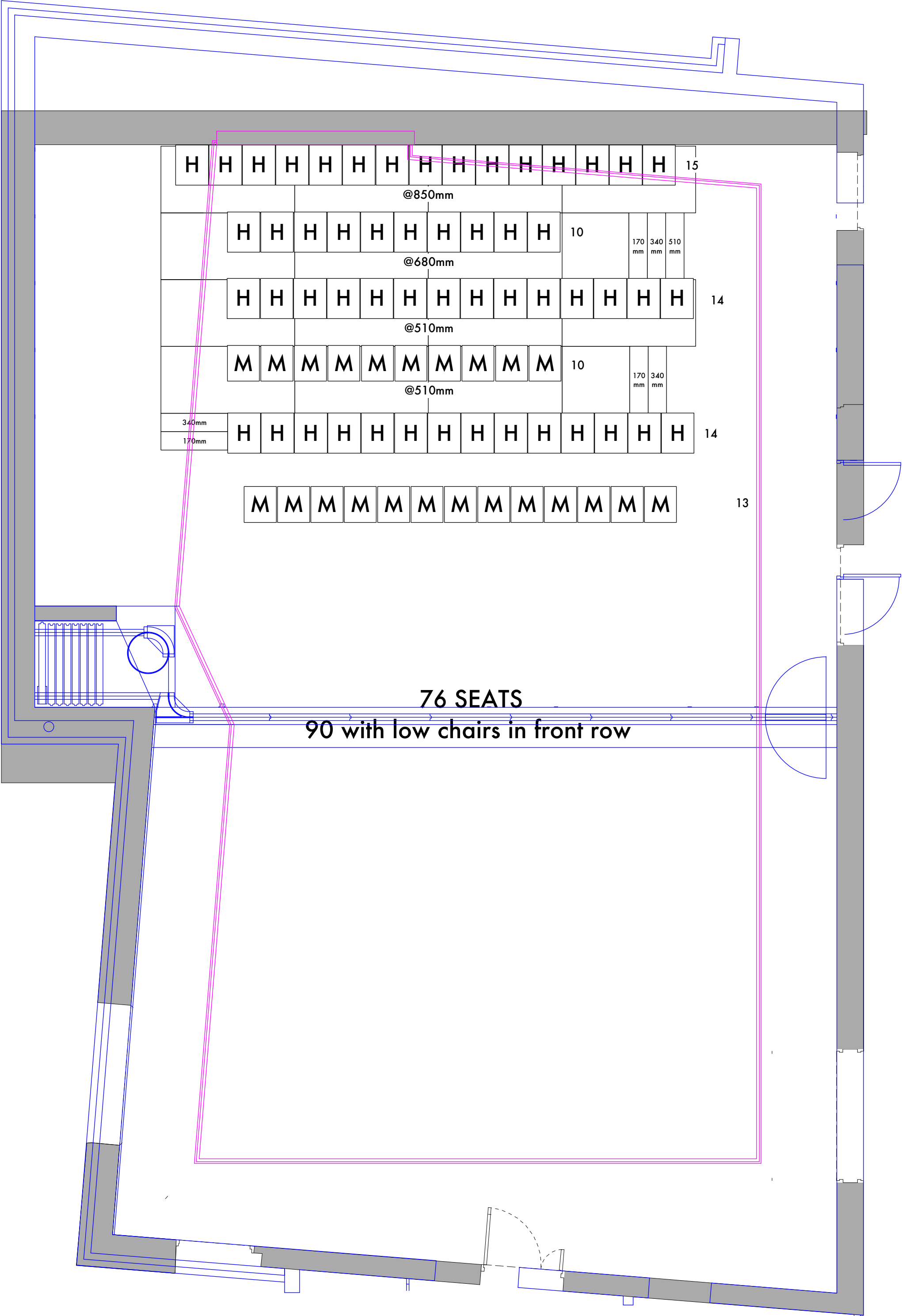


The Lir Studio 1

Shared plan Rev 1

01/08/18

Lamp	Inventory	show 1	show 2	show 3	Remaining
Spx 15/30 Profile	16			16	0
spx 25/50 Profile	16		16		0
S4 Fixed Beam	6		6		0
70° lens	2				2
50° lens	2		2		0
36° lens	2		2		0
26° lens	2		2		0
Selecon Rama Fresnel	24		24		0
Selecon RamaPC	12		2	10	0
Par 64	12		6	6	0
S4 par	6			6	0
LUI Floods	12			12	0
Birdies	12	12			0
Followspot	1				1
		12	60	50	3



The Lir Academy Equipment

Studio 1

Audio

Desk

1 x Roland V-Mixsys-Std M400

Amps – in House Rack

1 x Yamaha P7000S Power Amplifier 2 x 700w 8 ohn

3 x Yamaha P5000S Power Amplifier 2 x 500w 8 ohn

3 x Yamaha P5000S Power Amplifier 2 x 250w 8 ohn

Speakers

4 x RCF 13000045 Acustica C5212-L Speaker 12" 500w 8ohm

1 x RCF 13000051 Acustica L Speaker 18" 1000w 8ohm

Mics

2 x Shure SM 58-LC

2 x Shure SM57-LC

Playback Rack – Single Flightcase

1 x Tascam MD-02B Minidisc Player / Recorder

1 x Fostex CR-500 Master Recorder

1 x Denon DN-C615 CD player – single

1 x Tascam 202MK4 Cassette twin deck

Rigging & Access

Box Truss (Prolyte X30D) 6.7m x 5.7m approx With centre truss – on Motors

Fixed Grid @ 7.5m – See Plan

1 x Tallescope Max PLATFORM Height 5.9M

1 x 14 Rung Zarges Max Recommended working Height approx 6.95m

Lighting

Control

1 x ETC Ion

96 Channels 10amp Dimming Zero 88

12 Channels 10amp Switching hot power Zero 88

Lanterns –all 16amp

16 x Philips SPX 1530 Zoom Profile

16 x Philips SPX 2550 Zoom Profile

6 x Source 4 Fixed Beam Profile

2 x 70 degree lens for Source 4 Fixed beam

2 x 50 degree lens for Source 4 Fixed beam

2 x 36 degree lens for Source 4 Fixed beam

2 x 26 degree lens for Source 4 Fixed beam

24 x Selecon Rama Fresnel 1000w

12 x Selecon Rama PC 1000w

12 x PAR 64 –James Thomas- CP62

The Lir Academy Equipment

6	x	ETC Source 4 PAR
12	x	Selecon Lui Cyc Flood 1Kw
12	x	Par 16 Birdie 12v 50w
1	x	Followspot Teclumen Arena

Limited stock of house cable

Drapes – Black Wool Serge – A selection in stock please check for details

Other Items

Stage Management Desk		
2	x	Show Relay Monitors (Visual)
1	x	Paging Mic
1	x	Talkback Base Station
1	x	Cue Light Control
1	x	Clock & Counter

3	x	Wired Talk back Beltpack and Headset
4	x	Cuelight stations

