

SMOCK ALLEY THEATRE: 1662

ADDRESS:	7 Lower Exchange Street, Temple Bar, Dublin 8
WEBSITE:	www.smockalleytheatre.com
DESCRIPTION:	
RECOMMENDED FOR:	Comedy, Music, work that has little or no set POTENTIAL FOR RAISED STAGE 4m DEEP 6M WIDE TO BE INSTALLED
NOT RECOMMENDED FOR:	Design heavy work or large sets
CAPACITY:	170 in raked seating on 3 sides, (potential of extra loose seating for 50)
TECHNICAL NOTES:	<ul style="list-style-type: none">o Shared LX rig for the duration of the festival. Dublin Fringe Festival will design a shared lighting plan, in consultation with the companieso Dublin Fringe Festival provide a venue manager to oversee the smooth running of the venue, and crew to assist with hanging and focusing the shared LX rig and set up sound equipment. Each company must provide their own design team and technical crew to run their show and turnarounds
ACCESS:	<ul style="list-style-type: none">o Wheelchair accessible.
FRONT OF HOUSE ARRANGEMENTS:	<ul style="list-style-type: none">o Venue box office, front of house staff and bar facilities

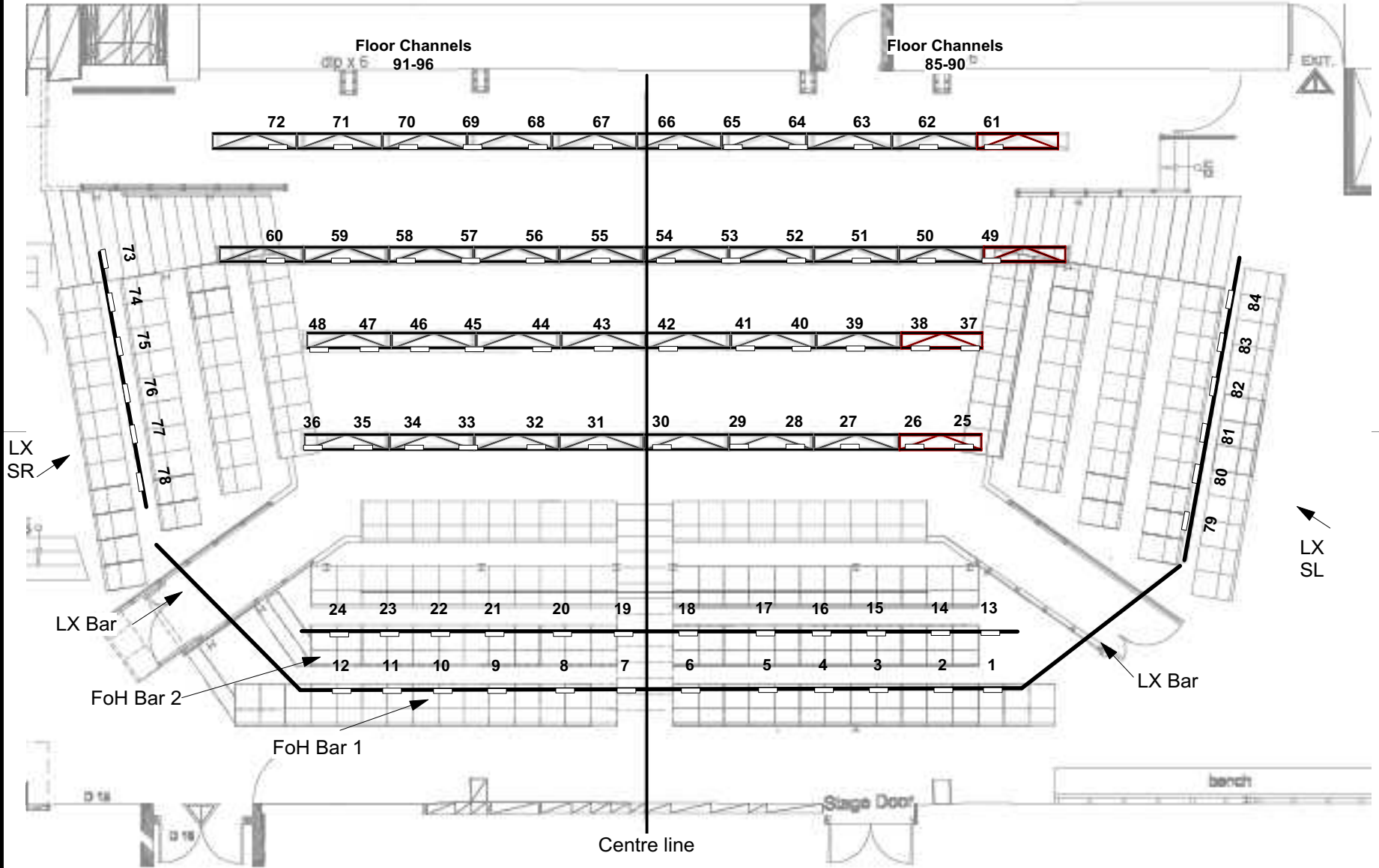
Main Space Circuit Plan

A

A

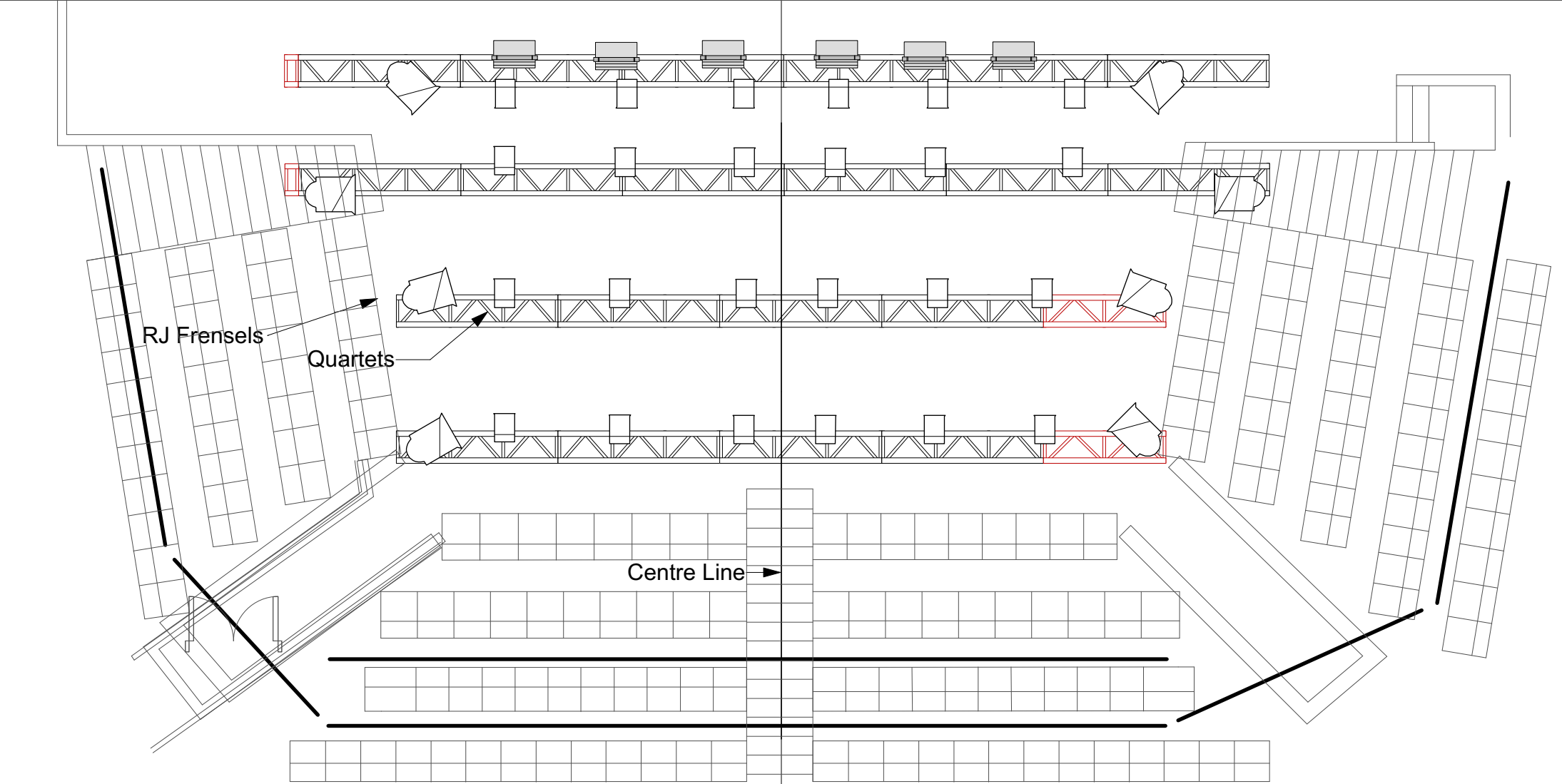
B

B



Smock Alley Theatre
Not to scale

General Rig



Fringe 2017 1662 Stock Allocation

STOCK	1662	USED Shared	Remaining
S4 15/30	8		8
S4 25/50	4		4
Strand Preludes 28/40	14		14
Quartet 25's(Profiles) (Black)			0
Quartet 25's(Profile) (White)			0
Selecon Aurora 1k	10	5	5
Selecon Acclaim Fresnels			0
Source 4 Pars	12		12
Robert Juliat 310h 1200w Fresnels	10	5	5
Robert Juliat 310h 1200w Pc	8		8
Quartet F(Black)	24	22	2
Quartet PC	0		0
Quartet PC (White)			0
Source 4 fixed 19deg	0		0
Par 64 Cp62	0		0
Boom Arms			
Splitters			
Fanouts			
Cable			
DMX			
	90	32	58

1

2

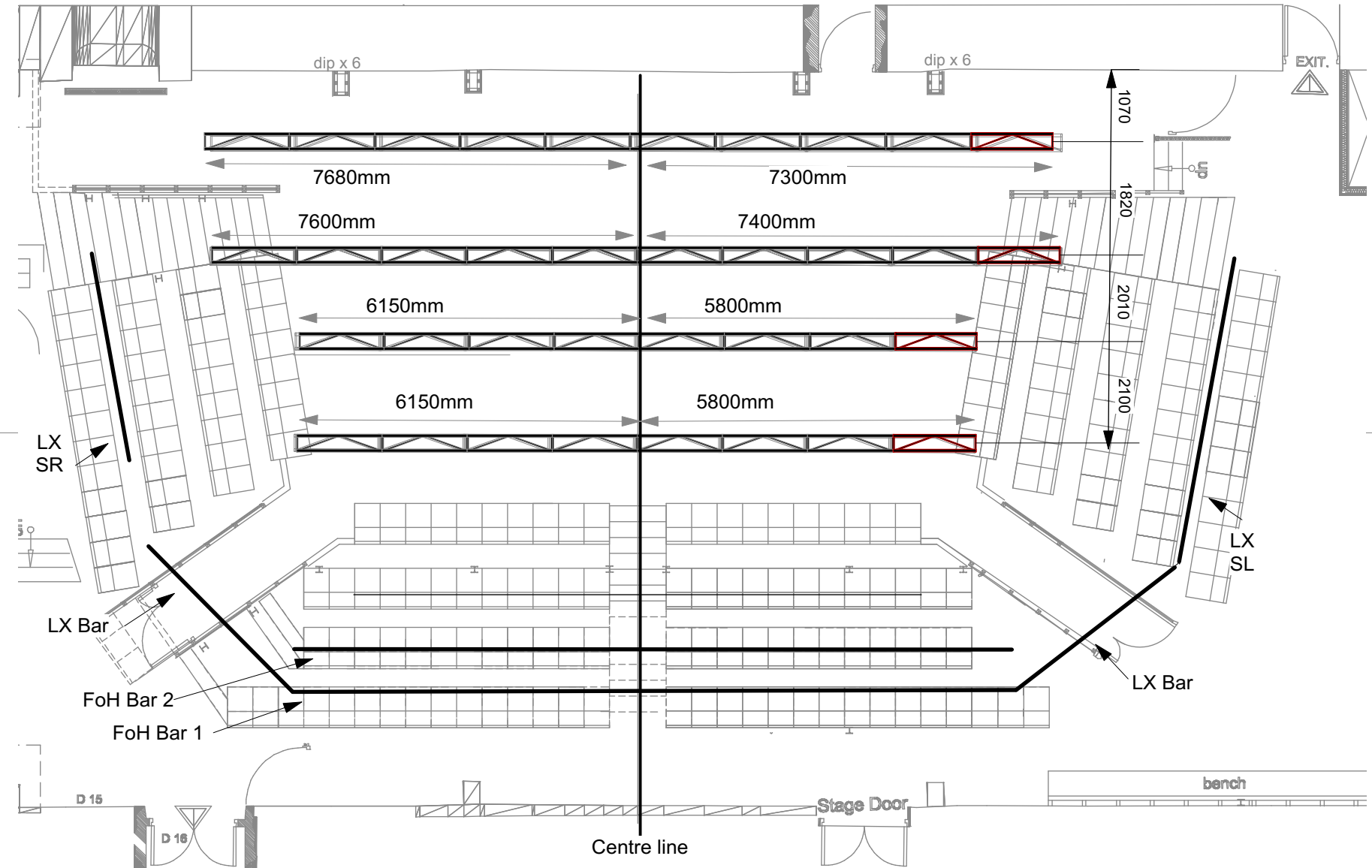
3

A

A

B

B



Smock Alley Theatre
Not to scale

1

2

3

Total Inventory		STOCK	1662	USED Shared	Remaining	STOCK	Studio	USED	Remaining
19	19	S4 15/30	8		8	S4 15/30	6		6
10	10	S4 25/50	4		4	S4 25/50	3		3
28	28	Strand Preludes 28/40	14		14	Strand Preludes 28/40	6		6
0	0	Quartet 25's(Profiles) (Black)			0	Quartet 25's(Profiles) (Black)	0		0
0	0	Quartet 25's(Profile) (White)			0	Quartet 25's(Profile) (White)	0		0
12	12	Selecon Aurora 1k	10	5	5	Selecon Aurora 1k	2	2	0
15	15	Selecon Acclaim Fresnels			0	Selecon Acclaim Fresnels	15	6	9
24	24	Source 4 Pars	12		12	Source 4 Pars	6		6
29	29	Robert Juliat 310h 1200w Fresnels	10	5	5	Robert Juliat 310h 1200w Fresnels	12	12	0
10	10	Robert Juliat 310h 1200w Pc	8		8	Robert Juliat 310h 1200w Pc	2		2
32	32	Quartet F(Black)	24	22	2	Quartet F(Black)	0		0
0	0	Quartet PC	0		0	Quartet PC			0
5	5	Quartet PC (White)			0	Quartet PC (White)	0		0
0	0	Source 4 fixed 19deg	0		0	Source 4 fixed 19deg	0		0
0	0	Par 64 Cp62	0		0	Par 64 Cp62	0		0
0	0	Boom Arms				Boom Arms			
0	0	Splitters				Splitters			
0	0	Fanouts				Fanouts			
0	0	Cable				Cable			
0	0	DMX				DMX			
184			90	32	58		52	20	32

Boys School	USED	Remaining	EXTRA	
5		5		0
3	3	0		0
8		8		0
		0		0
		0		0
0		0		0
		0		0
6		6		0
7	4	0		0
		0		0
8	4	4		0
		0		0
5		5		0
0		0		0
				0
				0
				0
				0
				0
				0
42	11	28	0	0

	STOCK	Studio	USED	Remaining
20	S4 15/30	0	0	0
10	S4 25/50	2	2	0
31	Strand Preludes 28/40	14	12	2
6	Quartet 25's(Profiles) (Black)	0	0	0
2	Quartet 25's(Profile) (White)	0	0	0
10	Selecon Aurora 1k	4	0	4
15	Selecon Acclaim Fresnels	15	12	3
24	S4 Pars	0	0	0
30	Robert Juliat 310h 1200w Fresnels	8	2	6
18	Robert Juliat 310h 1200w Pc	8	8	0
27	Quartet F(Black)	0	0	0
11	Quartet F (White)	0	0	0
0	Source 4 fixed 19deg	0	0	0
0	Par 64 Cp62	0		0
0	Boom Arms			
10	Splitters			
0	Fanouts			
0	Cable			
0	DMX			
204		51	36	15

Black Box Lighting Stock	Studio
S4 15/30	8
S4 25/50	2
Strand Preludes 28/40	5
Selecon Aurora 1k	4
Selecon Acclaim Fresnels	15
Robert Juliat 310h 1200w Fresnels	8
Robert Juliat 310h 1200w Pc	8

Smock Alley Theatre Main Space Technical Specification

Get in/Out

Access

Exchange Street	
Glass doors	2300mm x 1350.
Green delivery door.	2260mm x 1240mm
Auditorium door DSL	2000mm x 1000mm

Cows Lane	
Load-in doors:	2600mm high x 2.200mm wide

Stage

Stage Depth:	7500mm from back wall to front row seating
Stage Width:	12000mm at the widest point upstage and 9000mm at the seating downstage.
Ceiling height:	5485mm
Grid trim height:	4250mm

Rigging

Grid	4 motorised trusses (LX)
FOH 1	2 Fixed IWB's
FOH 2	2 Fixed IWB's
Drapes	1 spilt curtain (back wall)
Loose equipment	20 stage weights
Access equipment	1 Zarge 1 small zarge 2 x wooden A frames

Dimmers

ETC Sensor rack, housing 2 x 48x CEM+Module located behind the stage.
96 x 3kw channels in total
All circuits are 16amp
48 over the stage
6 channels on the floor upstage right
6 channels on the floor upstage left
12 channels Foh 1
12 channels Foh 2
6 channels over the audience stage right.
6 channels over the audience stage left.

Lighting desk

ETC ION located at the top of the auditorium stage right.

Lamp Stock	
RJ Fresnel	16
RJ PC	8
Strand Preludes 28/40	14
Selecon Aurora 1 K	10
S4 Pars	16
S4 Profile 15/30	12
S4 Profile 25/50	6
Quartet F (Black)	26

Talkback

Canford *tecpro* Master Station MS721 with 6 belt packs and headsets.

Sound

Desk	Allen & Heath ilive R72. Located at the top of the auditorium stage right
Amps	2 x Yamaha p3500 for the PA
Speakers	2 Martin x AQ12's (FOH) 2 Martin Audio Blackline S18 Bass Bins (subs) 2 martin LE 1200 Series (Mon)
Management	Allen & Heath iDR-out Audio Output Expander Martin Audio AQX system controller (crossover)
D.I	2 x AR-133 BSS Audio, 1 x Samson S-direct
Playback	Numark twin CD deck. Not patched in. Sony MD player. Not patched in.
Stage boxes	iDR-16 stage box at the control position 12/4 upstage right
Hot power x 8	2 points upstage right floor level 1 point upstage left floor level 1 point centre LX 1 1 point stage left LX 2 1 point stage left LX 3 1 point for the sound desk 1 point above FOH 1

Smock Alley Theatre normally provides 1 technician to assist with the get in. We do not provide sound engineers, lighting technicians or stage management for the running of the shows. A member of Smock Alley Theatre's technical staff is on site at all times but does not form part of the get in crew.

A risk assessment should be furnished to the Technical Manager before the get in.
Failure to notify any risk associated with the production will result in a possible refusal of that item or action as a part of the show.

General information

Wheelchair access is from Exchange Street Lower.

Facilities

4 dressing rooms all with mirrors

Laundry room with a washing machine and tumble dryer.

Green room with a fridge, kettle and microwave.

3 toilets back stage.

2 showers back stage

Induction loop hearing aid.

Get in time is 10am until 10pm for the purpose of load in, tech and rehearsals.

David Halpin
Technical Manager
Smock Alley Theatre

1

2

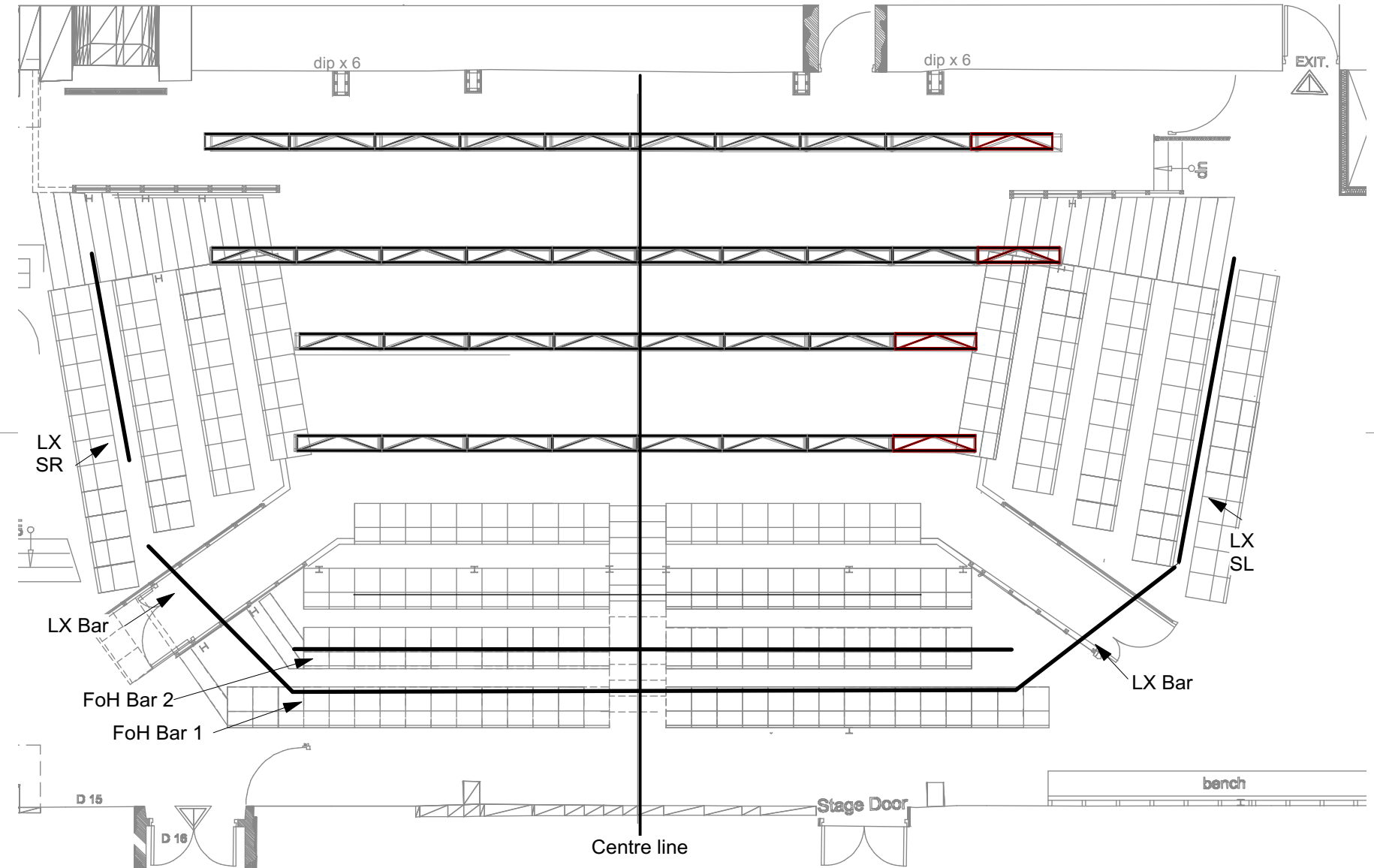
3

A

A

B

B



Smock Alley Theatre
Not to scale