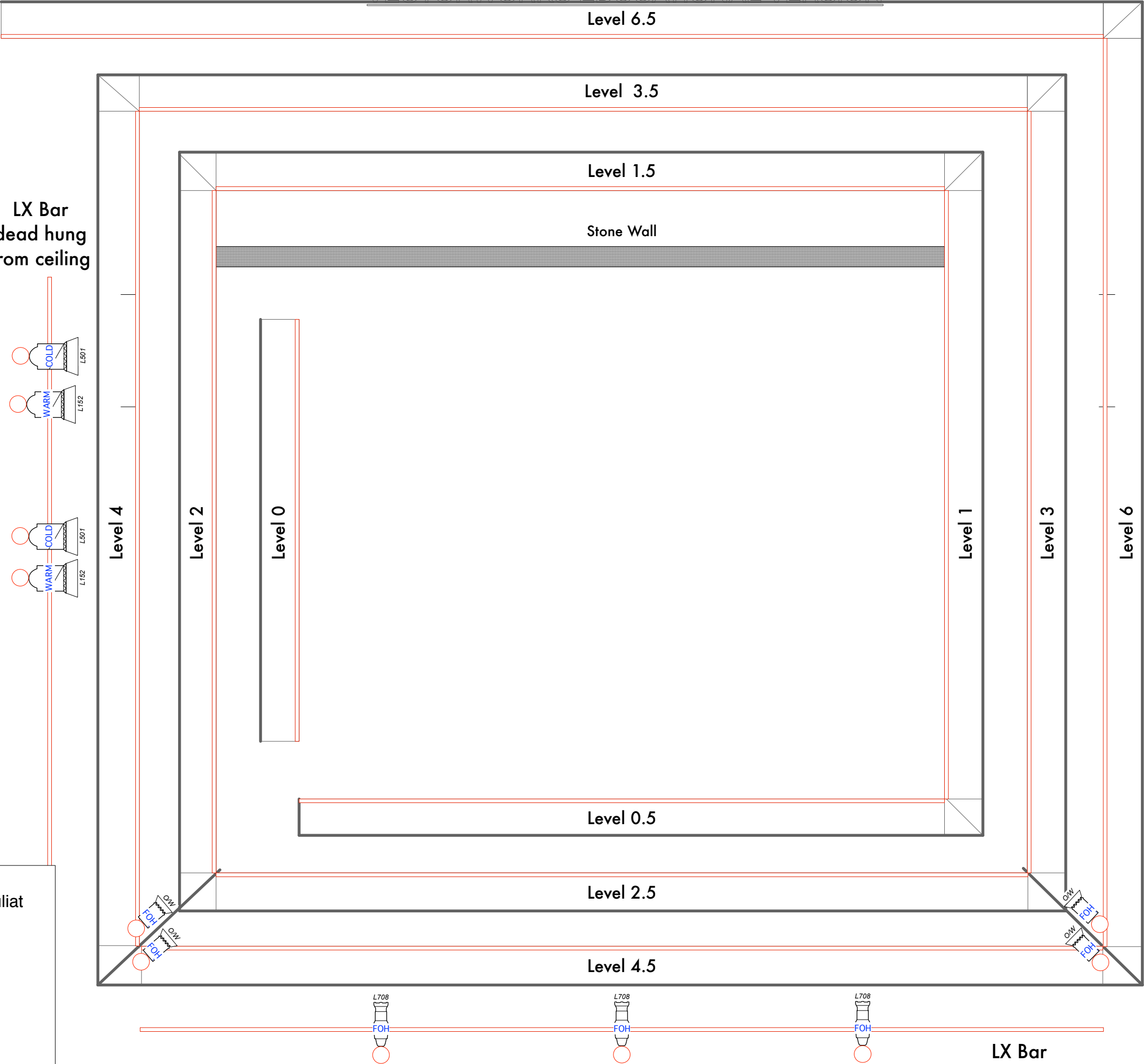


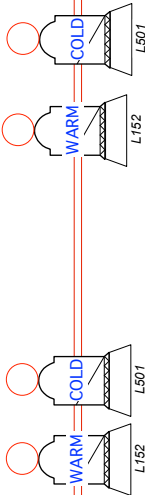
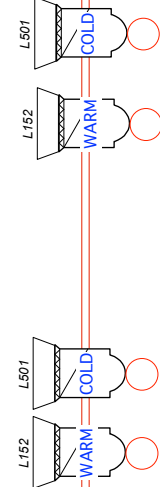
# SMOCK ALLEY THEATRE: BOYS SCHOOL

<b>ADDRESS:</b>	7 Lower Exchange Street, Temple Bar, Dublin 8
<b>WEBSITE:</b>	<a href="http://www.smockalleytheatre.com">www.smockalleytheatre.com</a>
<b>DESCRIPTION:</b>	Very unusual and atmospheric space. Great height. Exposed brick walls. A well surrounded by galleries/walkways. Basic technical spec
<b>RECOMMENDED FOR:</b>	<ul style="list-style-type: none"><li>o Theatre (not traditional/end-on), circus (including aerial), comedy. 60 minutes duration</li><li>o Shared venue - 2 shows per day.</li></ul>
<b>NOT RECOMMENDED FOR:</b>	<ul style="list-style-type: none"><li>o Very limited set storage space</li></ul>
<b>CAPACITY:</b>	Capacity 45-75 in raked seating. Please enquire with venue.
<b>TECHNICAL NOTES:</b>	<ul style="list-style-type: none"><li>o Shared LX rig for the duration of the festival. Dublin Fringe Festival will design a shared lighting plan, in consultation with the companies</li><li>o Dublin Fringe Festival provide a venue manager to oversee the smooth running of the venue, and crew to assist with hanging and focusing the shared LX rig and set up sound equipment. Each company must provide their own design team and technical crew to run their show and turnarounds</li></ul>
<b>ACCESS:</b>	<ul style="list-style-type: none"><li>o Wheelchair accessible.</li></ul>
<b>FRONT OF HOUSE ARRANGEMENTS:</b>	<ul style="list-style-type: none"><li>o Venue box office, front of house staff and bar facilities</li></ul>



LX Bar  
dead hung  
from ceiling

LX Bar  
dead hung  
from ceiling



Level 4

Level 2

Level 0

Level 1

Level 3

Level 6

Level 3.5

Level 1.5

Stone Wall

Level 0.5

Level 2.5

Level 4.5

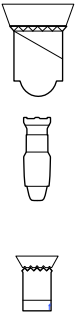
L708  
FOH

L708  
FOH

L708  
FOH

LX Bar  
dead hung  
from ceiling

Show	
Dublin Fringe 2018	
Venue	Smock Alley Boys School
Stage Designer	Various
Lighting Designer	Various
Drawing Title	Shared Rig
Drawing Purpose	Informative
Drawn By	
Aaron Kelly	
Date	01/08/18
Scale	1:50 / A3
Rev	1
Sht No	1
Notes	



Robert Juliat  
310 HF  
Fresnel  
ETC  
Source-4  
Zoom  
25°-50°  
Strand  
Quartet F

STOCK	Boys School	USED	Remaining
S4 15/30	5		5
S4 25/50	3	3	0
Strand Preludes 28/40	8		8
Quartet 25's(Profiles) (Black)			0
Quartet 25's(Profile) (White)			0
Selecon Aurora 1k	0		0
Selecon Acclaim Fresnels			0
Source 4 Pars	6		6
Robert Juliat 310h 1200w Fresnels	7	4	0
Robert Juliat 310h 1200w Pc			0
Quartet F(Black)	8	4	4
Quartet PC			0
Quartet PC (White)	5		5
Source 4 fixed 19deg	0		0
Par 64 Cp62			
Boom Arms			
Splitters			
Fanouts			
Cable			
DMX			

## **The Boys' School Theatre Technical Specification**

### **Theatre Specifications**

Full Stage Depth from the rail to the wall : 6800mm

Stage Width: 8120mm

Full walkway width 1450mm

Stage floor to bottom of the windows 2270mm

No scene dock

Fixed Lighting Grid Height 8200mm

Get in door 1000mm wide x 1950 mm high

### **Seating**

Seating capacity: 75

15 Church Pews in total

12 on the stage level seating 45

3 behind the stage on the ground level seating 15

3 on the second level with restricted viewing seating 15

### **Facilities**

2 Long Dressings

1 Backstage toilet

Please note that there is no Greenroom

There is no scene dock

### **Sound**

Dynacord Powermate 1600-3 (Mixing Desk)

2 martin LE 1200 Series as FoH and are positioned on the top level.

8 way stage box on the up stage left side

### **Lighting**

Strand 300 Lighting Desk

47 channels of dimming that are located on the top level on IWB's.

Dimmers: ETC smart rack

House lights are hard patched to channels 59+60

No dmx points on stage

Lamp Stock	
S4 15/30	7
S4 25/50	4

Strand Preludes 28/40	14
Selecon Aurora 1 K	2
S4 Pars	8
Robert Juliat 310h 1200w Fresnels	13
Robert Juliat 310h 1200w PC	2
Quartet F (Black)	6
Quartet PC (White)	5

**Please Note.**

Structural changes are not permitted.

No removal of handrails or IWB's

No painting in the back stage area.

No spray paint or aerosols permitted

Unsupervised access to the theatre is not permitted.

No screwing into the floor or walls.

Houselights are not to be used in a chase effect.

Smock Alley Theatre normally provides 1 technician to assist with the get in. We do not provide sound engineers, lighting technicians or stage management for the running of the shows. A member of Smock Alley Theatre's technical staff is on site at all times but does not form part of the get in crew.

A risk assessment should be furnished to the Technical Manager before the get in. Failure to notify any risk associated with the production will result in a possible refusal of that item or action as a part of the show

**N.B** Get in time is 10am until 10pm for the purpose of load in, tech and rehearsals

David Halpin  
Technical Manager  
Smock Alley Theatre