

Show

**Combined rig
Assisted solo
After**

Venue

Project Arts Centre SU

Stage Designer

Lighting Designer

Drawing Title

Fringe 2018

Drawing Purpose

Drawn By

Aaron Kelly

Date

31-8-18

Scale

1:75/ A3

Rev

2

Sht No

1

Notes

All hired stock

PROJECT ARTS CENTRE: SPACE UPSTAIRS	
ADDRESS:	East Essex St, Dublin 2
WEBSITE:	www.projectartscentre.ie
DESCRIPTION:	
RECOMMENDED FOR:	
NOT RECOMMENDED FOR:	
CAPACITY:	
TECHNICAL NOTES:	<ul style="list-style-type: none"> o Shared LX rig for the duration of the festival o Dublin Fringe Festival provide a venue manager to oversee the smooth running of the venue, and also provide crew to hang and focus the shared LX rig and set up sound equipment. Each company must provide their own design team and technical crew to run their show and turnarounds
ACCESS:	o Wheelchair accessible with induction loop system.
DRESSING ROOMS:	2 Shared dressing rooms with shower, wc and show relay
FRONT OF HOUSE ARRANGEMENTS:	<ul style="list-style-type: none"> o In house box office and front of house staff. o Venue bar and busy foyer area

Project Dimmer Plan S.U.

Facility Panel On Stage	
U.S.R.	
135a	148a
136a	149a
137a	150a
138a	151a
139a	152a
140a	157b
141a	158b
142a	159b
143a	160b
144a	157b @ 5k
145a	158b @ 5k
146a	159b @ 5k
147a	160b @ 5k

Facility Panel On Stage	
D.S.R.	
37A	141
38A	142
39A	143
40A	144
41A	145
42A	146
135	147
136	148
137	149
138	150
139	151
140	152

Upstage Gantry	
27a	30a
26a	19a
25a	28a
99	102
98	101
97	100
93	96
92	95
91	94
87	90
86	89
85	88
63	66
62	65
61	64
57	60
56	59
55	58
51	54
50	53
49	52
45	48
44	47
43	46
21	24
20	23
19	22
15	18
14	17
13	16
9	12
8	11
7	10
3	6
2	5
1	4
115	House Lights
116	House Lights

Upstage Gantry	
111	114
110	113
109	112
105	108
104	107
103	106

21a	24a
20a	23a
19a	22a
15a	18a
14a	17a
13a	16a
9a	12a
8a	11a
7a	10a
3a	6a
2a	5a
1a	4a

81	84
80	83
79	82
75	78
74	77
73	76
69	72
68	71
67	70

39	42
38	41
37	40
33	36
32	35
31	34
27	30
26	29
25	28

Facility Panel On Stage	
U.S.L.	
117	129
118	130
119	131
120	132
121	133
122	134
123	31a
124	32a
125	33a
126	34a
127	35a
128	36a

Facility Panel On Stage	
D.S.L.	
117a	132a
118a	133a
119a	134a
120a	153b
121a	154b
122a	155b
123a	156b
124a	157b
125a	158b
126a	159b
127a	160b
128a	153b @ 5k
129a	154b @ 5k
130a	155b @ 5k
131a	156b @ 5k

Please Note*

Dimmers are paired throughout the rig

Paired dimmers are colour coded and marked with A + B

There is socapex out paired with single sockets for each 6 ways of dimming

Truss are cabled with socapex and 6 way I.W.B. as needed.

5K Dimmers have 32amp single phase sockets

Control Room

Downstage Right Facilities Panel

LX		Sound	
16amp Dimmers	37A – 42A	Stage Mic Lines	1 – 18
Paired with	135 - 140	HSO comm. ports	1-2
Socapex Out	141 - 145	SDB 16amp power	3 sockets
	147 - 152	SDB 13amp power	3 sockets
Domestic Power	8 x 13amp		

Downstage Left Facilities Panel

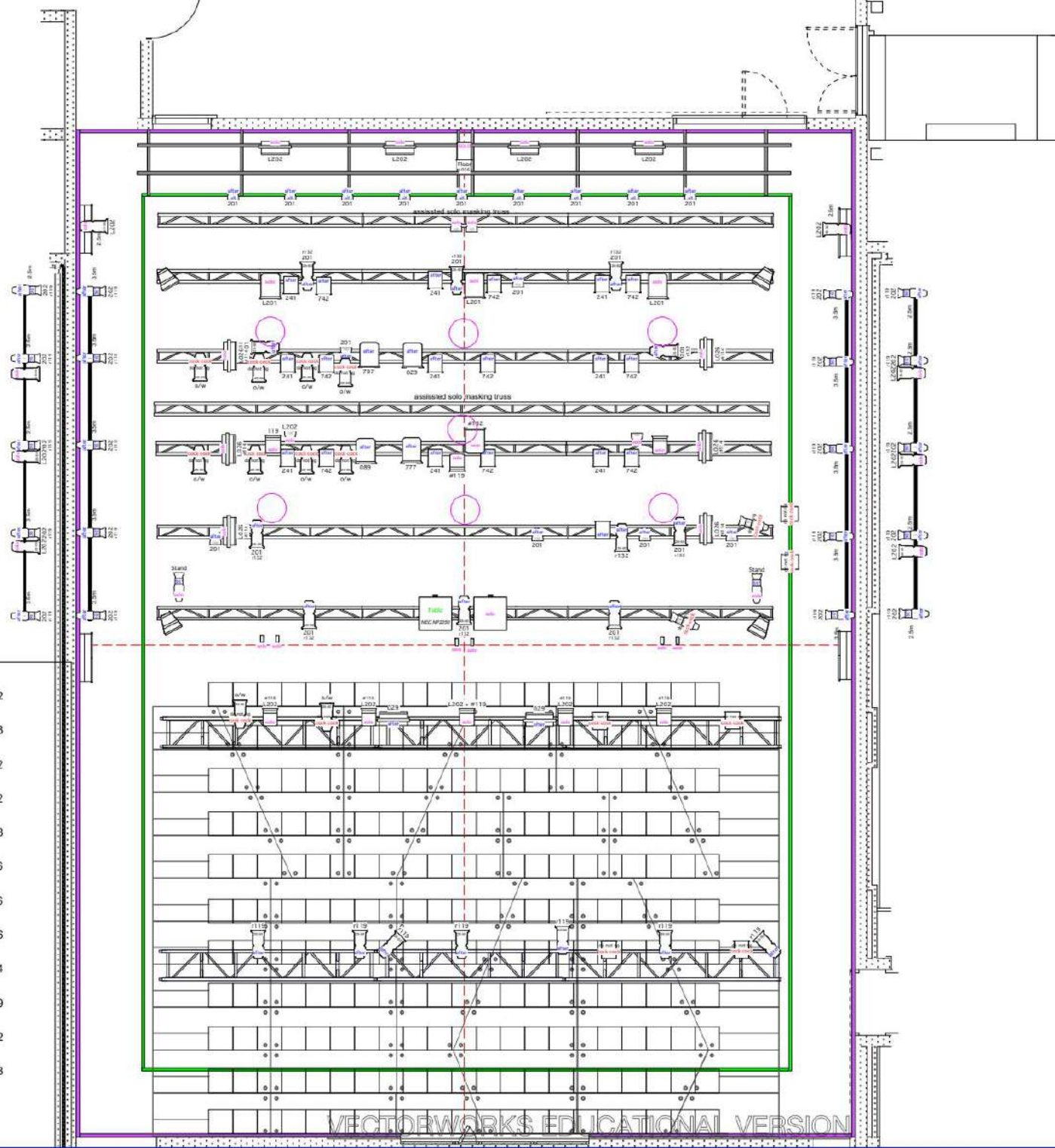
LX		Sound	
16amp Dimmers	117A - 122A	Stage Mic Lines	37 - 54
Paired with	123A – 128A	SSO xlr out	12 - 14
Socapex out	129A – 134A	HSO comm. port	No.8
		SDB 16amp power	3 sockets
5K 32Amp Sockets paired to 16amp sockets	153A – 160A	SDB 13amp power	2 sockets
DMX Port	No.4	32amp 3 phase power	1 socket
Domestic Power	4 x 13amp		

Upstage Right Facilities Panel

LX		Sound	
16amp Dimmers Paired with Socapex out	135A – 140A	SSO xlr out	9 - 10
	141A – 146A	HSO comm. port	No.7
	147A – 152A	SDB 16amp power	3 sockets
		SDB 13amp power	2 sockets
5K 32amp sockets paired with 16amp sockets	157B – 160B		

Upstage Left Facilities Panel

LX		Sound	
16amp Dimmers	117 - 122	SSO xlr out	5 – 8
Paired with	123 - 128	Stage Mic Lines	19 - 36
Socapex out	129 - 134	HSO comm. port	No. 5 + 6
	31A – 36A	SDB 13amp power	4 sockets
DMX port	No.2	32amp Single Phase power	1 socket
63amp 3 Phase Power	1 Socket		
Domestic power	6 x 13amp		



Show

Combined rig
Assisted solo
After

Venue
Project Arts Centre SU

Stage Designer

Lighting Designer

Drawing Title

Fringe 2018

Drawing Purpose

Drawn By
Aaron Kelly

Date	Scale
31-8-18	1:75/ A3

Rev	Sht No
2	

Notes

All hired stock

SPACE UPSTAIRS - TECHNICAL SPECIFICATIONS	
Last Updated: April 2012	
Please provide your own gel, gaffer, LX tape etc...	
Any house stock used by visiting companies will be charged back	
DIMENSIONS	Total Floor Area Stage And Auditorium L18400mm x W14400mm x H 6325mm Setting line is 9.1m from upstage wall
SEATING	End On Seating Is Standard (Other seating configurations please discuss with venue)
GET IN	Via Goods Lift. Clearance 3500mm L x 2000mm W x 2880mm H (1300mm door width at stage level)
SOUND	
SPEAKERS	6 x Meyer UPA-1P Full Range Powered Speakers
	2 x Meyer 650 PP Subwoofer Self Powered Speakers
CABLE	24 Channel Stage Box with 12 auxiliary returns all on XLR
	Sufficient cable provided to run all in house stock. See attached patch layout for onstage Facilities Panels
CONTROL	1 x Midas Verona 240FC
	1 x DBX 1046 Quad Compressor Limiter
	1 x M2000 TC FX Processor
	1 x DBX Quad noise gate
	1 x DN 360 Klark Technic Stereo Graphic Equalizer
PLAYBACK	2 x Tascam MD-501 Player Recorder
	2 x Denon DN C630 CD player
RIGGING	
RIGGING	14 GIS 500kg Electric Motor Hoists And Trolleys
	7 Spans Of Slick Minibeam 300mm Square Truss 2 Spans of Prolyte Gantry truss dead hung over seating
	1 x 14 way Motor Controller
	6 x 6m Aluminum Bars
AV	

	2 x NEC NP 2250 c/w hanging brackets 1 x Wahlberg DMX Shutter
LIGHTING	
UNITS	12 x Strand Iris 1200w floods
	8 x Robert Juliat 2000w fresnels
	22 x Strand Cantata 1200w fresnels
	8 x Strand Cantata 1200w PC
Please note all ETC lanterns at 575w	24 x ETC Source4 Zoom 25/50 profiles
	28 x ETC Source4 fixed beam profiles 7 x 19' lenses 15 x 26' lenses 14 x 36' lenses 24 x 50' lenses 8 x Gobo Holder B Size 6x Source 4 Irises
	22 x ETC Source4 Par w/ 4 lens each
	1 x Le Maitre MVS Hazer
	1 x Geni Golden Strobe 2000w
CONTROL	1 x Strand Light Palette Live 1500 channels <u>OR</u> 1 x ETC ION 2000 channels c/w 1 x 2 x 20 Universal Fader Wing incl. Net 3 Wireless Remote
DIMMING	160 x ETC Sensor CE Digital Dimmers 152 @ 3kw
	8 @ 5kw
CABLE	16 x 3m 6way IWB's
	30 x 10m Socapex
	10 x Female Socapex Fanouts
	50 x 10m 16amp Extensions
	25 x 3m 16amp Extensions
	6 x 16amp Splitters

	8 x 16amp Grelcos
GRID CIRCUITS	114 Overhead And Socapex
Please see Dimmer plan attached	18 x 16amp Sockets SR
	18 x 16amp Sockets SL
COMMS	
COMMS	1 x Stage Managers Base Station
	6 x Beltpacks And Headsets
LOOSE EQUIPMENT	
LOOSE EQUIPMENT	8 x Doughty Booms Bases
	8 x 3m Stage Braces
	16 x Stage Weights
	16 x Boom Arms
ACCESS EQUIPMENT	
ACCESS EQUIPMENT	1 x Tallescope 3.9m – 5.9m platform height
Licensed drivers only	1 x Zargees 3 Way Ladder - 14 rungs
	1x Skylift X26-32 MEWP Electric Scissor Lift
DRAPES	
	2 x Tabs 7m Wide 6m H
	10 x Legs 3m Wide 6.5m H
	4 x Border 12m W x 1.5m H
	4 x Border 12m W x 3m H
	1x White Cyclorama Cloth 11m W x 6m H
DRESSING ROOMS	
	2 x Dressing Rooms Are Equipped With Show Relay, WC and showers Dressing rooms are on the mezzanine level, beside the Green Room, one flight of stairs down from stage level.
Technical Support and Access	
Project supplies one member of our technical staff during get-in, get out, technical, dress rehearsal and run of the show, to permit visiting technical crew access to the premises and facilities. Access to the spaces is from 10.00am – 10.00pm.	

Visiting Companies are permitted up to three sessions on get-in day and subsequent production days and on the day of the first performance. One session is available on the subsequent performance day(s) unless agreed

Sessions may be called from 10.00 – 14.00, 14.00 – 18.00 and 18.00 to 22.00. The building closes at 22.00 during production week and all Company members, cast and crew must be off the premises by this time.

Project does not provide staff to crew or act as Lighting Operators or Sound Engineers for the running of shows. However, Project can, if required, sub hire freelance operators, the cost of which will be contracted back to visiting companies

